

PACESETTER
Staple Fibre Sizing Range

PRASHANT
GROUP

PRASHANT WEST POINT



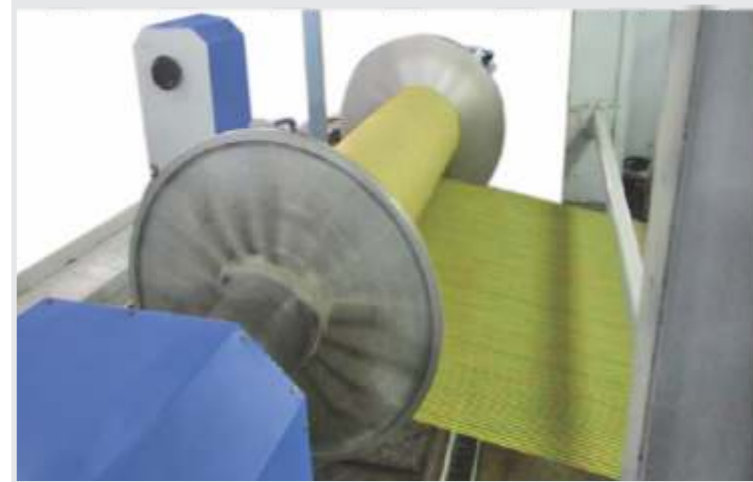
Leading the way in warp preparation

 **Indo-US** 
Joint Venture

PWSP

BEAM THAT UNWINDS SMOOTHLY

- Stationary and magazine creel with modular design for varied product mix.
- Thread tension is measured by load cell and controlled through PLC in closed loop system.
- Efficient braking system for each beam.
- Guide rollers for proper warp separation.
- Separate pneumatic circuit for brake in case of power failure.



BEAM LET OFF DEVICE

- Precise unwinding device for sectional warper beams.
- Pneumatically controlled tension regulation through PLC and load cell.

UNIFORM SIZING OVER WARP LENGTH & WIDTH

- Three roll feeding system with positively driven unique feed roll assembly.
- Stretch control for feed and sizing section by multi section servo drive control system.
- Temperature control with direct and indirect heating.
- Size recirculation and filtration system.
- Anti deflection squeeze rollers engineered to apply uniform squeezing pressure on yarn sheet.
- PLC controlled system supported by high tech software.
- Individual drive for size boxes, with digital data exchange, ensures reduced wet stretch between sections.



VERTICAL SIZE BOX

- Innovative vertical pullout system for superior performance.
- Compact configuration for saving of space.
- Lower size liquor consumption per set.
- Very easy to attend yarn sheet from every angle.

IMPROVED QUALITY WITH GENTLE DRYING

- Pre dryer and final dryers can be arranged vertically or horizontally as per the requirement.
- Dry lease tension between dryer motor and delivery motor is maintained through precise control via linear transducer and PLC.
- Cylinder temperature is controlled via process controllers.
- Yarn tension is maintained at the pre-determined value.
- Moisture is measured after final dryer and regulated through digitally controlled drive system.



MOISTURE CONTROLLER

- 3 pair of high-tech moisture sensors provided.
- Moisture % can be set through PLC from main touch screen panel.
- Separate lamp provided to indicate moisture condition for operator's convenience.
- Linear speed of m/c is controlled as per preset value.



PERFECTLY WOUND CYLINDRICAL BEAM

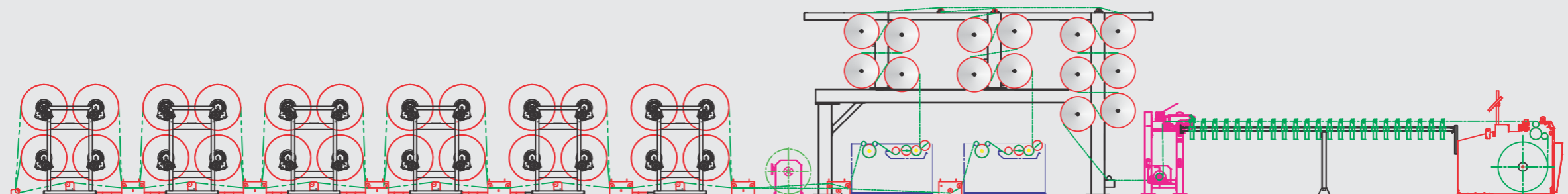
- Extremely robust construction.
- Constant winding tension and uniform tension across the width.
- Three roll concept for delivery system.
- Motorized movement of beam carriages.
- Reverse rotation for improved efficiency for left and right beams.
- Easy and safe donning and doffing through geared hydraulic mechanism.
- Process controller for all operation parameters.

STATE-OF-THE-ART SIZING TECHNOLOGY

Journey from Invention to Innovation



Width	: 1800-4000 mm
Flange Dia.	: 800-1250mm
Speed	: up to 180 m/min



Typical installation for high performance sheeting line having two size boxes with vertical pull out system and hightech beam winder.

PERFECT SIZING FOR EXCELLENT WEAVING

Highest Quality

- Uniform & Optimal sizing with Reduced hairiness
- Low elongation and Increased tensile strength of yarn
- Precise moisture control and stretch
- Higher abrasion resistance and Improved weavability

Highest Productivity

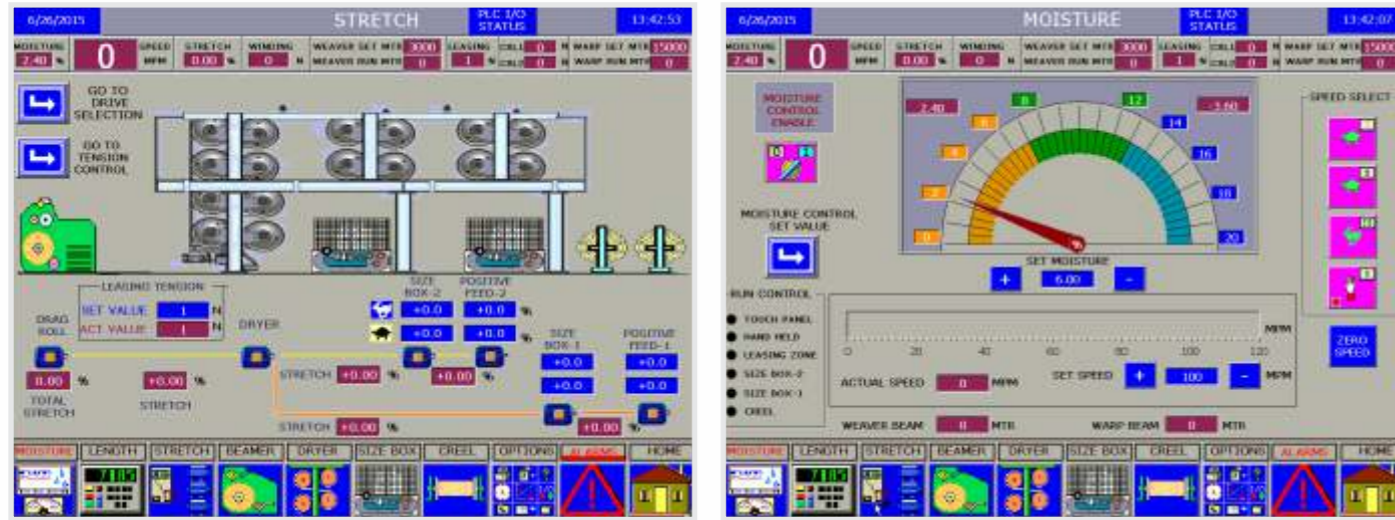
- Automatic monitoring of all parameters
- Comprehensive production data management
- User friendly operations

AUTOMATION AND CONTROLS

Entire sizing operation, parameter setting, monitoring and controls are processed through advanced electronics by touch screen with colour graphics to adjust/control parameters like creel tension, squeeze pressure, size temperature, size level, stretch, cylinder temperature, winding tension, warp length, machine speed, moisture, fault diagnosis etc.

Total synchronization is done through hi-tech servo motors and servo drives which are provided in Beam winder, Delivery Roll, Dryer cylinder, Size Roller and Feed roller.

Machine diagnostic function for control system maintenance and trouble shooting. Reports can be generated through PC interface.



Stretch Control

Moisture Controller

REMOTE SENSING FACILITY

Machine can be linked with our Head Office for online diagnosis.



PRASHANT GROUP

established in 1975, is one of India's prominent and fast growing textile machine manufacturing company.

The group has co-operations with leading European and American textile machine manufacturing companies which bring edge in updated technology and enhancement in products profile.



Infrastructure

Spread across 70,000 m², the company has modern infrastructure. The lush green environment, insulated factory premises and work friendly atmosphere support in creating world class products.



People

The company's greatest source of strength and inspiration lies in its manpower. The company's dedicated and professional staff is focused on customer satisfaction, operational excellence and design innovation.



Corporate Social Responsibility

The Group is actively involved in the upliftment of the tribal communities in several districts of Gujarat and Bihar. The company is always on the forefront, extending a helping hand to the society focusing mainly on education and health care.

EQUIPMENT RANGE



- Direct Warper and V Creel
- Sizing Machine for Filament and Glass Fiber
- Indigo Rope & Slasher Dyeing Range
- Denim Preparation Equipments
- Poly Beamer for PP and HDPE Tapes
- Beam to Cone Winder



- Robotic Sectional Warper
- High Speed Sectional Warper & Creel
- Single end Sizing
- Beam to Beam Rolling Machine



- Warp Beam Handling System
- Computerized Beam Storage
- Inspection and Packaging Machine



Specifications are subject to change due to continuous technical developments.



PRASHANT WEST POINT MACHINERY PVT. LTD.
(An ISO 9001:2008 certified company)

Plot No. 4/A-3, G.I.D.C. Estate, Phase 1, Vatva, Ahmedabad 382 445. India
Phone : +91 79 25830603 / 25833384, Fax : +91 79 25894020
E-mail : westpoint@prashantgroup.com
www.prashantgroup.com

